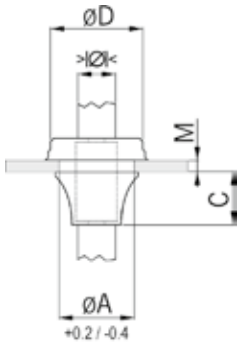


# Quickseal Kabeleinführungstüllen

## Quickseal cable grommets

### Metrische Nenngrossen | Metric rating



Material: EPDM  
 Einsatztemperatur: -40°C / +110°C  
 Schutzart: IP 67  
 Eigenschaften: Halogenfrei, allseitig IP 67 durch „Pushout-Membrane“, gute Chemikalien- und Witterungsbeständigkeit  
 Einsatzbereich: Universell einsetzbar bei Wandstärken von 1 bis 4mm (M16 - M50) bzw. 0.5 bis 2mm ( M12)

Material: EPDM  
 Temperature range: -40°C / +110°C  
 Protection class: IP 67  
 Properties: Halogen-free, all-round IP 67 protection thanks to the “pushout-membrane”, resistant to chemicals and weatherproof  
 Application: Suitable for holes in materials of 1-4mm (M16 - M50), or M12 from 0.5-2mm



| Dunkelgrau RAL 7001 |                 |                 |         |         |          | Dark grey RAL 7001  |  |    |
|---------------------|-----------------|-----------------|---------|---------|----------|---------------------|--|----|
| ØA<br>mm            | > Ø <<br>min mm | > Ø <<br>max mm | M<br>mm | C<br>mm | ØD<br>mm | Art.-Nr.   Art. No. |  |    |
| 12.5                | 4.0             | 7.0             | 0.5-2   | 5.6     | 20.0     | 14.582.33           |  | 50 |
| 16.5                | 5.0             | 9.0             | 1-4     | 11.0    | 21.0     | 14.582.34           |  | 50 |
| 20.5                | 8.0             | 13.0            | 1-4     | 13.4    | 25.5     | 14.582.35           |  | 50 |
| 25.5                | 11.0            | 17.0            | 1-4     | 15.3    | 30.5     | 14.582.36           |  | 50 |
| 32.5                | 15.0            | 20.0            | 1-4     | 18.6    | 38.5     | 14.582.37           |  | 25 |
| 40.5                | 19.0            | 28.0            | 1-4     | 21.7    | 48.5     | 14.582.38           |  | 25 |
| 50.5                | 27.0            | 35.0            | 1-4     | 25.0    | 60.5     | 14.582.39           |  | 10 |



| Hellgrau RAL 7035 |                 |                 |         |         |          | Light grey RAL 7035 |  |    |
|-------------------|-----------------|-----------------|---------|---------|----------|---------------------|--|----|
| ØA<br>mm          | > Ø <<br>min mm | > Ø <<br>max mm | M<br>mm | C<br>mm | ØD<br>mm | Art.-Nr.   Art. No. |  |    |
| 12.5              | 4.0             | 7.0             | 0.5-2   | 5.6     | 20.0     | 14.583.03           |  | 50 |
| 16.5              | 5.0             | 9.0             | 1-4     | 11.0    | 21.0     | 14.583.04           |  | 50 |
| 20.5              | 8.0             | 13.0            | 1-4     | 13.4    | 25.5     | 14.583.05           |  | 50 |
| 25.5              | 11.0            | 17.0            | 1-4     | 15.3    | 30.5     | 14.583.06           |  | 50 |
| 32.5              | 15.0            | 20.0            | 1-4     | 18.6    | 38.5     | 14.583.07           |  | 25 |
| 40.5              | 19.0            | 28.0            | 1-4     | 21.7    | 48.5     | 14.583.08           |  | 25 |
| 50.5              | 27.0            | 35.0            | 1-4     | 25.0    | 60.5     | 14.583.09           |  | 10 |



| Schwarz RAL 9005 |                 |                 |         |         |          | Black RAL 9005      |  |    |
|------------------|-----------------|-----------------|---------|---------|----------|---------------------|--|----|
| ØA<br>mm         | > Ø <<br>min mm | > Ø <<br>max mm | M<br>mm | C<br>mm | ØD<br>mm | Art.-Nr.   Art. No. |  |    |
| 12.5             | 4.0             | 7.0             | 0.5-2   | 5.6     | 20.0     | 14.582.93           |  | 50 |
| 16.5             | 5.0             | 9.0             | 1-4     | 11.0    | 21.0     | 14.582.94           |  | 50 |
| 20.5             | 8.0             | 13.0            | 1-4     | 13.4    | 25.5     | 14.582.95           |  | 50 |
| 25.5             | 11.0            | 17.0            | 1-4     | 15.3    | 30.5     | 14.582.96           |  | 50 |
| 32.5             | 15.0            | 20.0            | 1-4     | 18.6    | 38.5     | 14.582.97           |  | 25 |
| 40.5             | 19.0            | 28.0            | 1-4     | 21.7    | 48.5     | 14.582.98           |  | 25 |
| 50.5             | 27.0            | 35.0            | 1-4     | 25.0    | 60.5     | 14.582.99           |  | 10 |